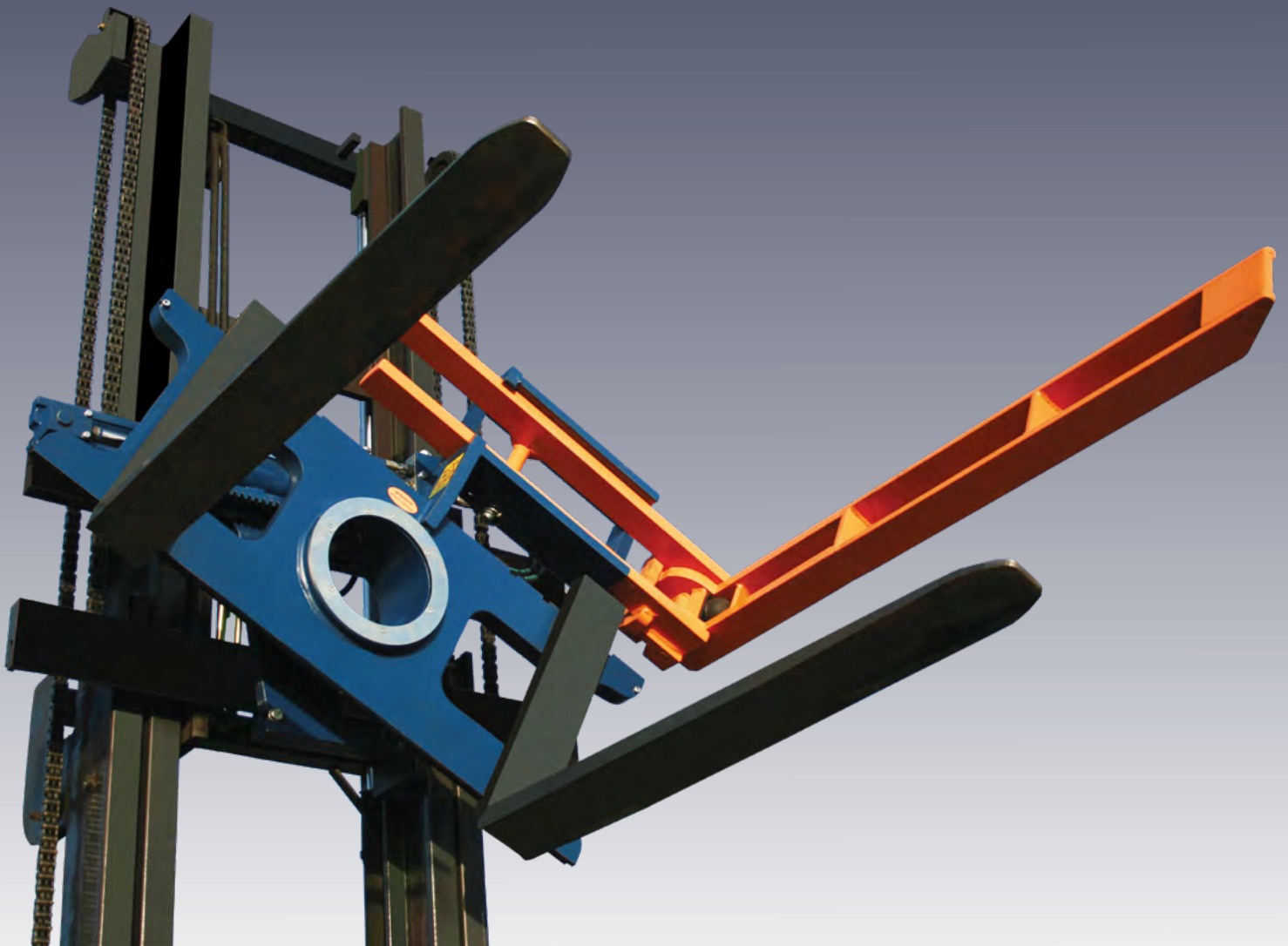
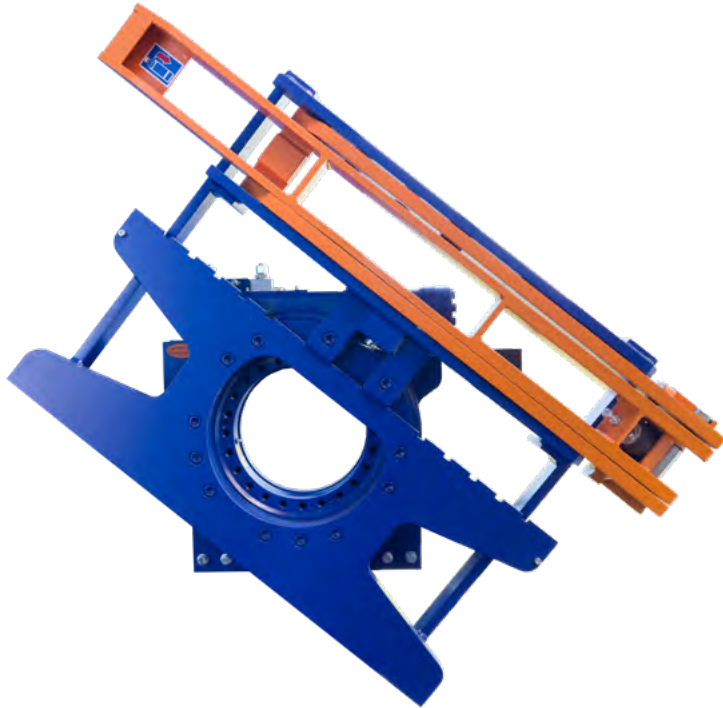


griptech

BOX ROTATORS AND ROTATORS

360° or 190° rotatable





Rotators from Gripteck- All around Quality

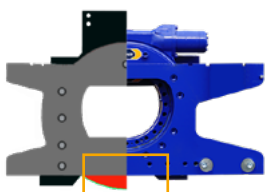
Gripteck offers rotators in different versions and varieties of combination possibilities. But one thing they all have in common is the perfect see-through and a high quality standard. Gripteck's rotators are ideal for emptying boxes and containers, for example in agriculture and industry. The unique visibility achieved by the patented design offers a great advantage in the field of goods handling as well as operational safety.

The construction is extremely robust and durable, which Gripteck's rotators proves daily.

Features:

- ▶ Good visibility
- ▶ No protruding of the lower swivel head
- ▶ Delivery does not contain the original forks - we recommend forks with lower reinforced FEM cam
- ▶ KIK series can be combined with weighing systems and fork adjusters from Gripteck
- ▶ GTR series can be combined with Gripteck weighing systems and parallel guided clamp devices

Slewing ring in the lower area does not protrude.



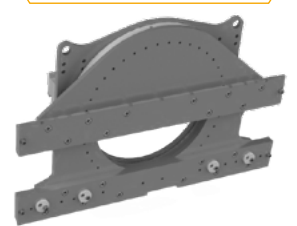
Locking disks designed excentrically



Can be combined with attachments



GTR 100B for heavy duty inserts



Box rotator | RM 190° in one direction



Box rotator RM - 190° rotatable in one direction

Load capacity 2.000kg - 3.000kg

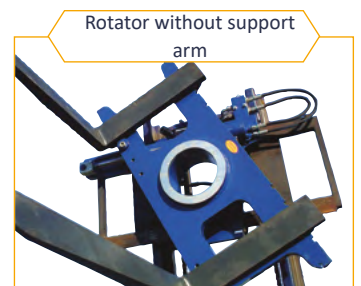
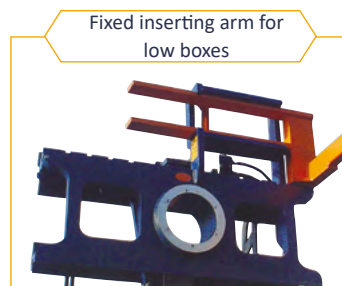
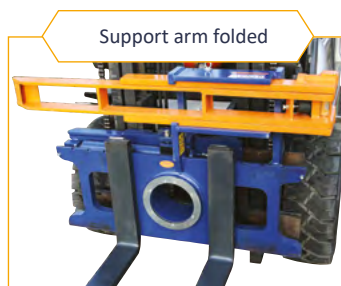
The Griptech box rotators are suitable for emptying boxes and containers in agriculture and light industrial applications. The boxes with a closed bottom, are secured against slipping by the side clear-view support arm. Boxes with a closed bottom, are secured against slipping, by the lateral free-view support arm. The RM series can be rotated 190° standard left-hand via a robust rack and pinion drive. A large plain bearing ensures optimum power transmission and a long service life.

Features:

- ▶ Good visibility (patented)
- ▶ Weight and stem dimension reduced
- ▶ Robust folding arm with automatic fixation in open or closed position
- ▶ Manual adjustment for boxes up to 1600mm width
- ▶ Turning range 10° more than usual

Remarks:

- ▶ Arm adjustable in 3 width positions for crates from 1050 to 1600mm width
- ▶ Thickness of the folding arm 70mm (minimum box height 850mm for FEM2A and 950mm for FEM3A)
- ▶ Thickness fixed insertion arm 50mm (minimum crate height 600mm for FEM2A and 700mm for FEM3A), maximum load capacity 1500kg
- ▶ Supplied without forks, we recommend the use of special forks with reinforced lower FEM cam
- ▶ For RM 20 series, the original fork carriage may be maximum 1150mm wide
- ▶ Standard painting base body blue (RAL 5002), support arm orange (RAL 2000)



Box rotator | KIK 360° with a lateral support arm



Box rotator KIK - 360° rotatable in both directions

Capacity 2.500kg to 3.200kg

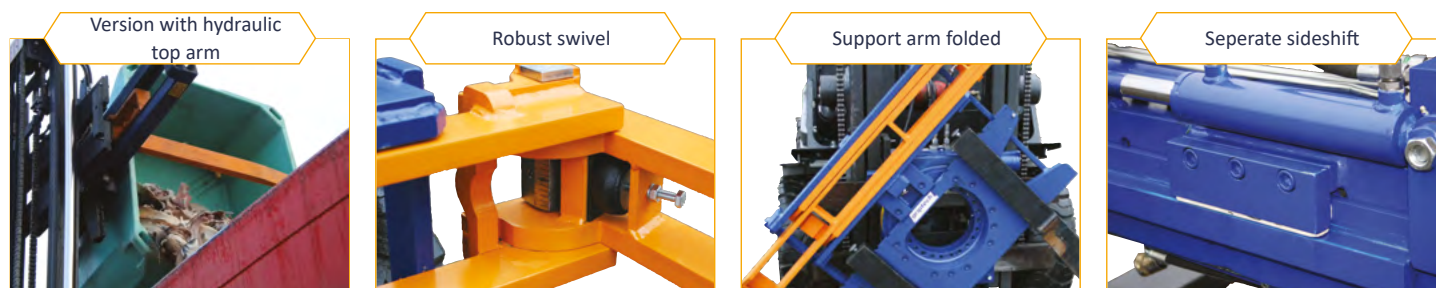
Griptech box rotators are suitable for emptying boxes and containers, especially in agriculture and are also used for light industrial applications. The boxes with a closed bottom are secured against slipping by the lateral free-view support arm (folding arm can be repositioned according to the preferred direction of rotation). The KIK series has a direct worm shaft drive on a high-quality slewing ring.

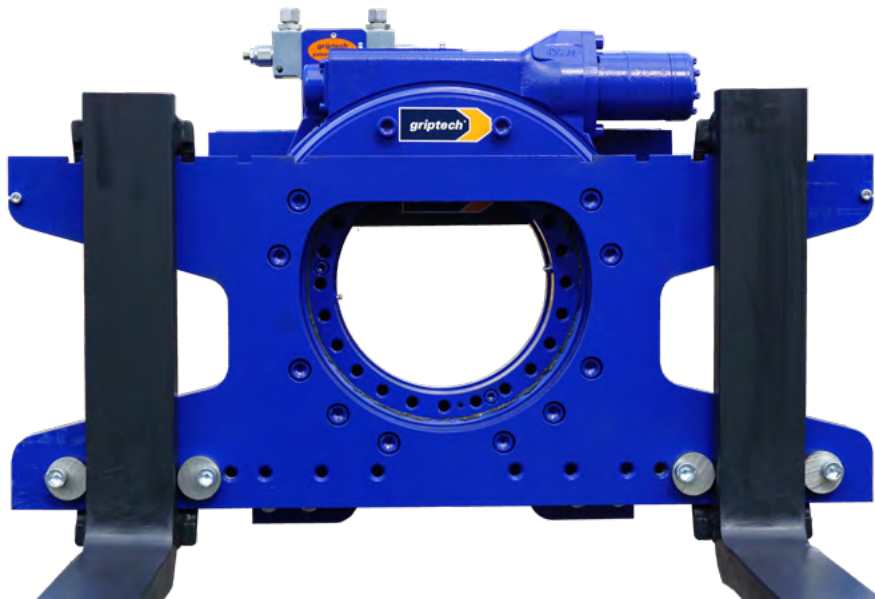
Features:

- ▶ Huge visibility
- ▶ Weight and stem dimension reduced
- ▶ Robust folding arm with automatic fixation
- ▶ Manual adjustment for crates up to 1600mm width
- ▶ Optionally with hydraulic top arm

Remarks:

- ▶ Arm adjustable in 3 width positions for boxes from 1050 to 1600mm width
- ▶ Thickness of folding arm 70mm
- ▶ Delivery without forks, we recommend the use of special forks with reinforced lower FEM cam
- ▶ Minimum crate height 850mm for FEM 2A or 950 mm for FEM 3A
- ▶ For the KIK 25 series the original fork carriage may be maximum 1150mm wide
- ▶ Standard painting base body blue (RAL 5002), support arm orange (RAL 2000)





Rotator KIK - 360° rotatable in both directions

Load capacity 2.500kg to 3.200kg

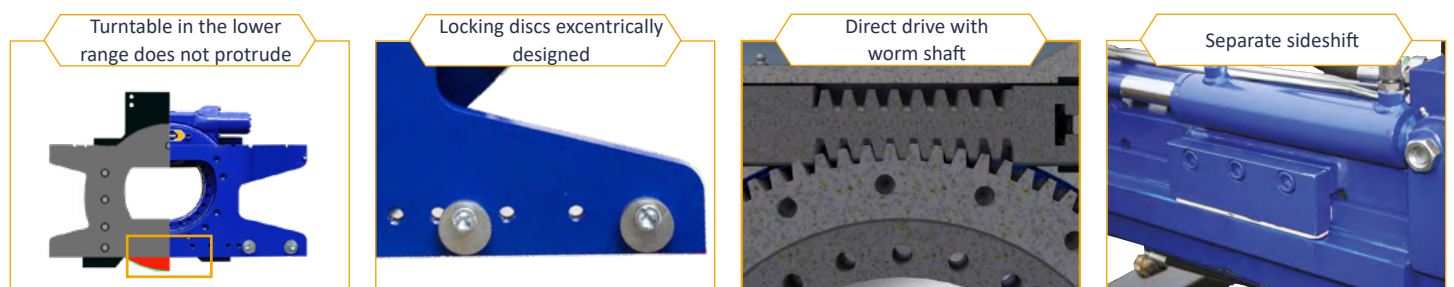
High-quality rotators with a slewing ring with direct drive via a worm shaft, with several turns always engaged. Suitable for emptying boxes and containers with entry pockets for the forks. The equipment offers a very good visibility. Standard including check valve and a side fork lock for different fork widths and width positions. We recommend using forks with reinforced lower claws.

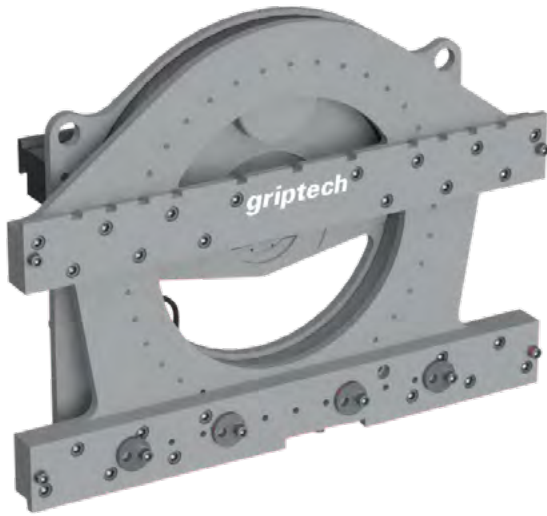
Features:

- ▶ Great visibility
- ▶ Reduced weight and front dimension
- ▶ Direct drive via worm shaft
- ▶ Lower locking disks designed excentrically, for the fork width

Remarks:

- ▶ Delivery without forks, we recommend the use of special forks with reinforced lower FEM cam
- ▶ For the series KIK 25 the original fork carriage may be maximum 1150mm wide
- ▶ Standard painting base body blue (RAL 5002)





Rotator GTR - 360° rotatable in both directions

Load capacity 4.000kg to 5.500kg

The GTR type rotator enables fast and precise tilting or simple rotation of a load. It is characterized by, construction from gear drive and gear rim and offers a corresponding durability at high working speed. The large viewing window provides the operator with the best viewing conditions on the tips of the forks. The indirect drive guarantees high torque values and smooth and powerful rotation of the load.

Features:

- ▶ Large viewing window for best visibility
- ▶ Weight and stem dimension reduced
- ▶ Indirect drive for high torque values
- ▶ Construction of gear drive and gear rim for high durability

Remarks:

- ▶ Delivery without forks, we recommend the use of special forks with reinforced lower FEM cam
- ▶ Version GTR100B with two gear motors for heavy duty applications from 10.000kg
- ▶ Standard painting base body gray (RAL 7021)

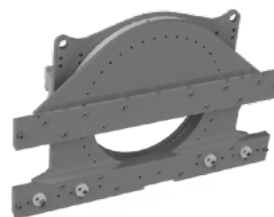
Version with vertical forks



Version with vertical support arm



GTR100B with two geared motors



In combination with pallet inverter



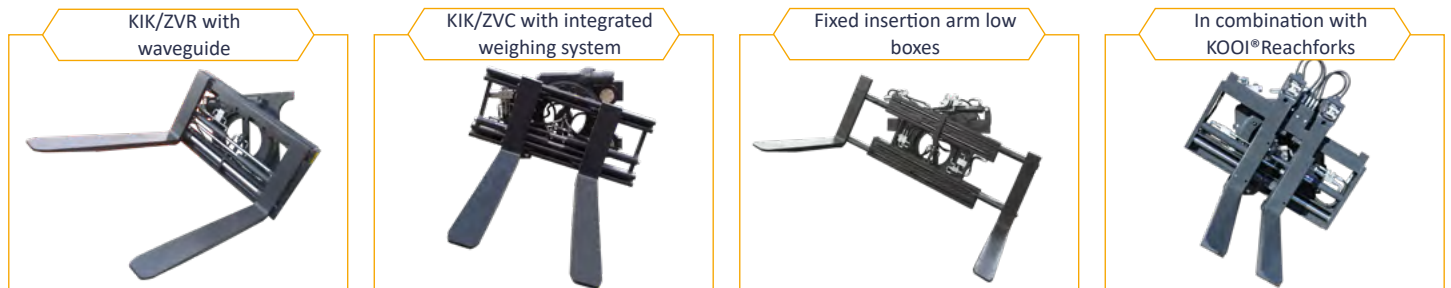
Rotator KIK in combination with fork positioners

Load capacity 1.500kg to 2.800kg

The rotators of the KIK series can be combined with a fork adjustment and empty containers with different widths. The rotation range is 360 degrees endless in both directions. The drive is a direct drive, which engages in the gear rim via a worm shaft. This direct drive without intermediate housing, whereby several teeth are always engaged, results in reduced tooth load, smooth running and a long service life.

The following design variants from 1.500kg to 2.800kg load capacity are available:

- ▶ **KIK/ZVC oder KIK/ZVR:** Adjustment range within the frame width
- ▶ **KIK/FPN:** Adjustment range outside the frame width
- ▶ Combination with KOOI® Reachforks or integrated weighing technology
- ▶ Optionally with separate sideshift



Rotator GTR in combination with parallel-guided clamps

Load capacity 1.200kg to 3.900kg

The series of GTR rotators can be combined with a parallel-guided clamp unit, a dump palletized and non-palletized goods of various types. The turning range is 360 degrees endless in both directions. The drive is a gear drive and gear rim design and offers a corresponding long service life. The indirect drive guarantees high torque values and smooth, powerful rotation of the load.

The following design variants from 1.200kg to 3900kg load capacity are available:

- ▶ **GPBR:** Rotating fork clamp
- ▶ **GPPR-E:** Pivoting fork clamp
- ▶ **GPBR-E:** Rotating bale clamp
- ▶ Can also be combined with Griptech weighing systems





Griptech GmbH
Konrad-Zuse-Straße 8
D-52134 Herzogenrath
T +49 2407 555 02 0
E info@griptech.de