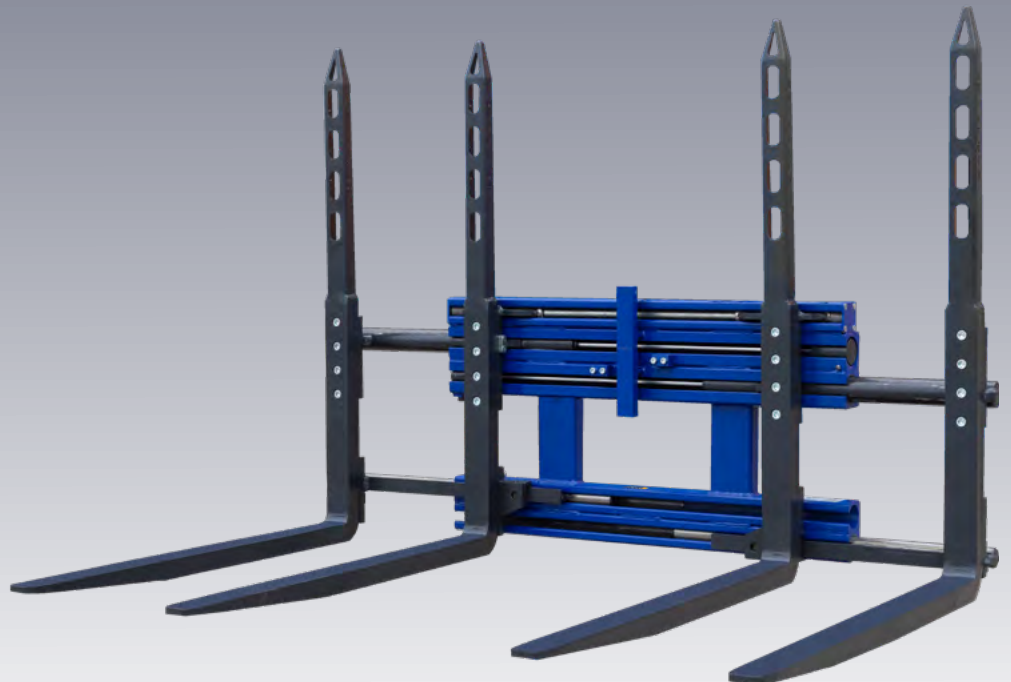
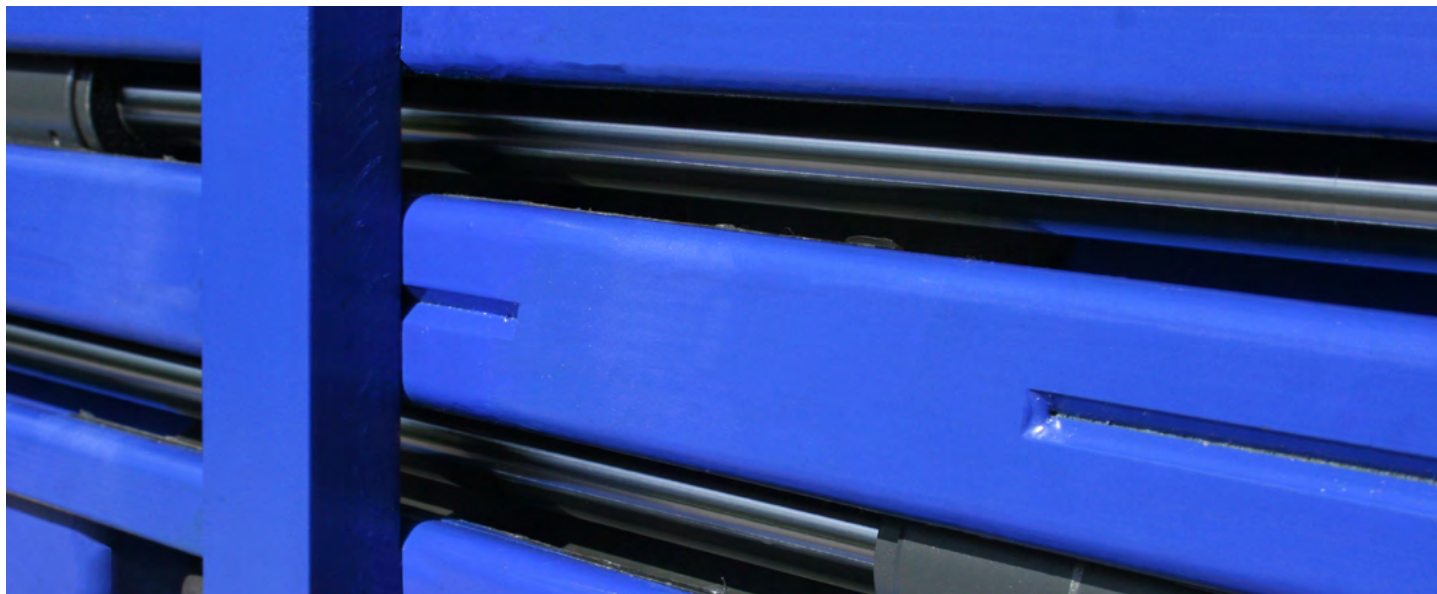


griptech

FORK POSITIONERS

within and beyond the frame width





,Integra' The free-view guide design from Griptech

Griptech has developed a unique guide construction as a guide body for various fork positioners. The base is made of extruded Omega profiles with a round inner guide to accommodate the adjustment cylinders and sliding arms. The rectangular outside forms the interface for the suspension hooks or the directly welded mast stringers. The large section modulus of the Omega profiles results in a stable frame construction without a back plate.

The integrated adjustment cylinders and piston rods are protected against damage and reduce operating costs. All cylinders are pendulum mounted in the guide profile to reduce stress on the seal sets. Due to the protected integrated cylinders, the visibility is unique.

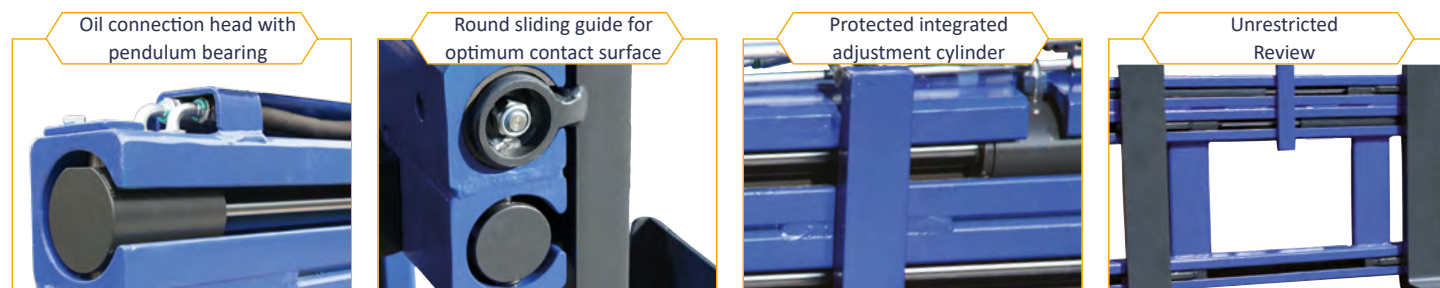
The round guide provides an optimal contact surface in all directions under a wide range of loads. High-quality and durable, wear-resistant PA bushings are located between the sliding arm and the omega profile.

Overall, the ,Integra' guide design offers very good visibility for the driver, favourable stem dimensions for improved residual load capacity and a lower risk of damage and thus reduced operating costs.

This unique guide design is used for:

- FPX series - fork positioner within the frame width
- FPN series - fork positioner beyond the frame width
- DVV series - multi pallet handler
- FPN-R series - fork positioner especially for reachtrucks and four-way reachtrucks
- ZVC series - fork positioner with adapter plates for attaching original forks

All series are also available with KOOI® Reachforks!



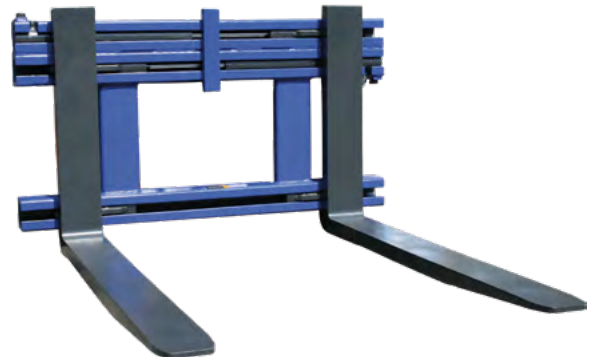
Free-view fork positioner FPX

Adjustment within the frame width

The Griptech FPX fork positioner is robust and offers excellent visibility. Both adjustment cylinders are integrated in the upper double guide in a protected manner.

Features:

- ▶ Load capacity of 1,800kg to 6,000kg
- ▶ Adjustment cylinder and piston rods are integrated and protected
- ▶ The upper sliding arms overlap and are relatively long
- ▶ No connection hoses in the frame and optimum visibility
- ▶ Cylinders pendulously connected to the frame
- ▶ Suspension hooks welded directly to the omega profiles, no back plate
- ▶ O-max to outer edge of frame; lower hooks screwed from the front
- ▶ Supplied with integrated or separate sideshift



Free-view fork spreader FPN

Adjustment beyond the frame width

The Griptech fork spreader FPN is particularly suitable for picking up and transporting long loads and wider pallets.

Features:

- ▶ Load capacity of 1,800kg to 6,000kg
- ▶ Adjustment cylinder and piston rods are integrated and protected
- ▶ No connection hoses in the frame and optimum visibility
- ▶ Cylinder pendulum-mounted to the frame
- ▶ Suspension hooks welded directly to the omega profiles, no back plate
- ▶ Forks screwed in the upper section
- ▶ Lower sliding arm reinforced
- ▶ Supplied with integrated or separate sideshift



Free-view fork positioner ZVC

With adapter plates for attaching ISO/FEM forks

The Griptech fork positioner ZVC can be used with the original forks.

Features:

- ▶ Load capacity of 2,000kg to 4,000kg
- ▶ Guide with robust Omega profiles
- ▶ For attaching the original forks
- ▶ Robust guide of the adapter plate in Omega profiles
- ▶ Optimum visibility
- ▶ With integrated or separate sideshift
- ▶ Suitable for different fork widths



Fork positioner | For reachtrucks and four-way reachtrucks

Free-view fork positioner FPN-R

Adjustment within the wheel arms - only 30mm lost load center

The Griptech fork positioner FPN-R is a compact fork positioner with an opening area between the wheel arms and is mounted on the integrated sideshift of the reachtruck or four-way reachtruck. The front dimension of 30mm is very small and has hardly any influence on the turning radius and aisle width.

Features:

- Load capacity of 1,600kg to 2,200kg
- Adjustment cylinder and piston rods are integrated and protected
- No connection hoses in the frame and optimal visibility



Free-view fork positioner FPN-RT

Adjustment beyond the frame width

Adjustment to outside the frame width with extended fork backs makes it possible to place the forks on the ground outside the wheel arms. With the additional lowered suspension, the lifting height of the vehicle remains unchanged (front end dimension and dead weight become slightly larger).



Free-view fork positioner FPN

Adjustment beyond the frame width

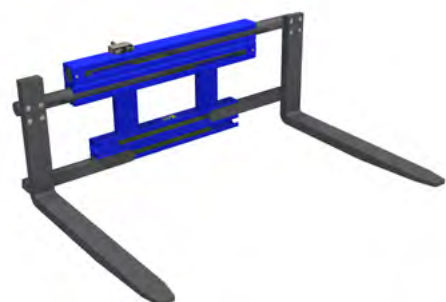
Adjustment beyond the frame width with extended fork back makes it possible to place the forks on the ground outside the wheel arms (the lift height is reduced by the wheel arm height).



Free-view fork positioner FPN-RTS

Adjustment beyond the frame width

The body of the double guide lies inside the wheel arms. With the mast moved forward, the forks can also be placed on the ground in front of the wheel arms.



Fork positioner ZVR - High performance model

Robuste shaft guidance for all application

For applications that require changing the fork spacing within the frame width, the ZVR fork adjustment, with a robust shaft guidance is the ideal attachment for all applications. Lateral forces are absorbed by the guide shaft. In the upper area, the fork teeth are supported in a U-profile via two rollers (if it is the version with separate sideshift via wear strips). The visibility and the front dimension are optimised and result in a maximum residual load capacity of the vehicle. The frame width can be selected wider than the original fork carriage. Synchronisation of the fork adjustment via a distributor valve.

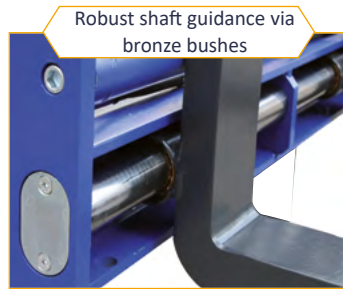


Features:

- ▶ Load capacity of 2,500kg to 14,000kg
- ▶ With integrated or separated sideshift
- ▶ Version integrated in mast available



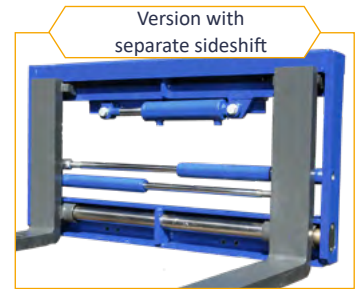
Stable connection
Piston rod/fork teeth



Robust shaft guidance via
bronze bushes



Support in the upper area
via rollers



Version with
separate sideshift

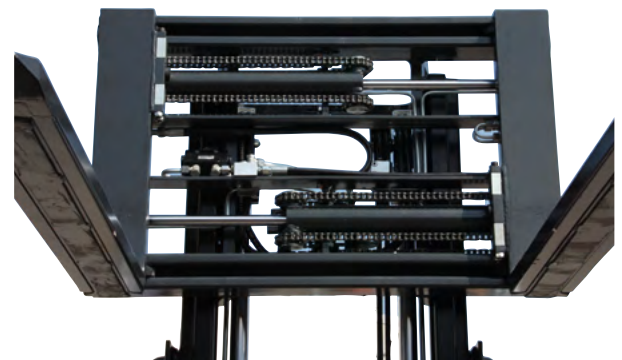
Fork positioner Shift2end with ‚Full Sideshift‘

Adjustment within the frame width

Shift2end is the optimal forklift attachment for loading and unloading containers and trucks.

The combination of fork adjustment and the increased sideshift make this attachment a universal tool for both extremely narrow and wide pallets.

This leaves the driver enough space to manoeuvre without touching the outer walls of the container or truck.



Sideshift completely to
the left



Pallet centred for
transport



Sideshift all the way to
the right



Shooting wide range at
maximum opening

Free-view multi pallet handler | DVV



DVV multi pallet handler

For 1-2 pallets

For loading many pallets, the multi pallet handler offers greater efficiency in internal logistics. With the four slim forks, the forks can be adjusted to pick up one or two pallets at a time. When picking up two pallets, the individual pallets can be pushed towards or away from each other. All Griptech multi pallet handler have a separate sideshift as standard.

Features:

- ▶ Load capacity 2,100kg to 5,000kg
- ▶ Piston rods of the adjustment cylinders are integrated and protected
- ▶ Robust body construction ,Integra' ensures durability and maximum operational safety
- ▶ Minimum lost load center
- ▶ Maximum visibility
- ▶ Standard V2A compression springs (no gas cylinders)
- ▶ Improved residual load capacity
- ▶ Round PA wear bushes for a large contact area
- ▶ Also available in combination with KOOL®Reachforks

Forks in closed position



Standard V2A compression spring



With separate Sideshift



Forks screwed on at the bottom rear



Multi pallet handler GDP

For 1-2 pallets

Excellent visibility through the clamp. Separate sideshift independent of fork position. Screwed forks with additional wear zone. Optimum synchronisation of the fork teeth due to built-in flow divider valve.

Features:

- ▶ Capacity of 2,000kg to 2,500kg
- ▶ Fork pairs are held apart by high-strength, integrated compression springs
- ▶ Slender load protection grille at the transition to the back of the forks
- ▶ Guide construction made of sturdy T- or C-profiles
- ▶ Incl. separate sideshift



Multi pallet handler GDQ

For 1-2-3 pallets

The multi pallet handler is suitable for transporting one, two or three pallets. It offers excellent visibility through the clamp. The separate sideshift is independent of the fork position. The forks are screwed with additional wear zone.

Features:

- ▶ Load capacity of 2,000kg to 3,600kg
- ▶ Fork pairs are held apart by high-strength, integrated compression springs
- ▶ Slim load protection grille at the transition to the back of the forks
- ▶ Guide construction made of sturdy T or C profiles
- ▶ Incl. separate sideshift



Multiple pallet handler DKPI for large fork lift trucks

For 2-4 pallets

For loading two or four pallets in a row, e.g. in the beverage sector, we offer a multi pallet handler guided by double shafts with 2,400mm long forks. For optimum visibility, the units are integrated into the mast and have a separate sideshift.

Features:

- ▶ Load capacity of 3,500kg or 4,800kg
- ▶ Fork length suitable for 2 pallets in a row (L= 2,400mm)
- ▶ Fork pairs are kept apart by hydraulic cylinders
- ▶ Incl. separate sideshift
- ▶ Available with additional load holder





Griptech GmbH
Konrad-Zuse-Straße 8
D-52134 Herzogenrath
T +49 2407 555 02 0
E info@griptech.eu