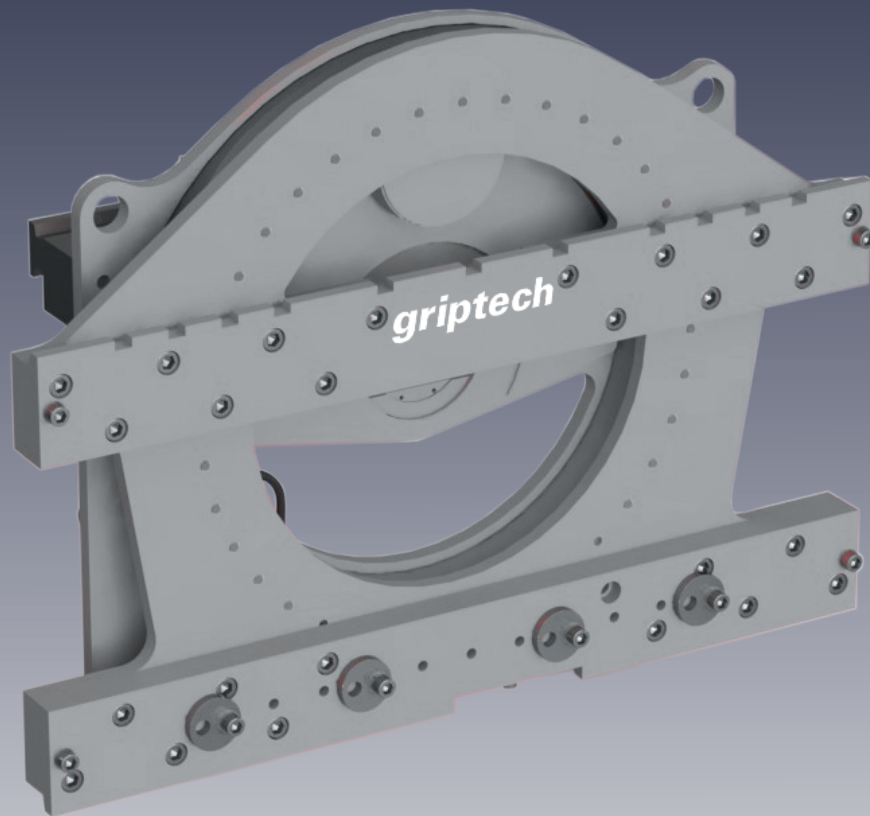


griptech

ROTATOR | GTR 360°



Features:

- ▶ From 4,000 kg load capacity
- ▶ Gear drive and ring gear construction for high operating speed
- ▶ Large viewing window provides optimal visibility of the forks
- ▶ High torque values with smooth and powerful rotation

Attachments

Weighing systems

Camera systems

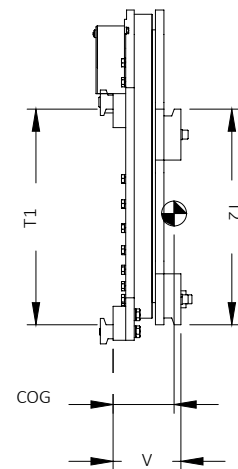
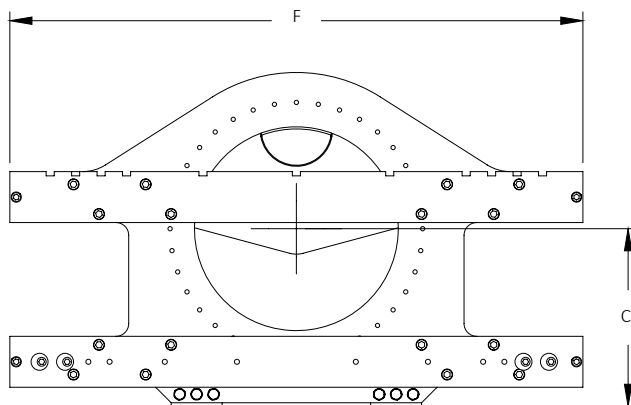
ROTATOR | GTR 360°

360° rotatable, continuously in both directions

The GTR rotator enables fast and precise tipping or simple rotation of a load. It is characterized by its gear drive and gear rim design and offers a correspondingly long service life at high working speeds. The large viewing window offers the driver the best possible view of the tips of the forks. The indirect drive guarantees high torque values and smooth, powerful rotation of the load.

Features:

- From 4,000 kg load capacity
- Gear drive and ring gear construction for high operating speed
- Large viewing window provides optimal visibility of the forks
- High torque values with smooth and powerful rotation



Rotator 360° gear drive and gear rim (1 function)

Series	Capacity for LC in mm	T1 ISO/FEM	T2 ISO/FEM	Width F mm	C mm	V mm	COG mm	Weight kg
GTR40B120	4000/500	III	III	1200	468	173	91	431
GTR40B130				1300			92	440
GTR40B150				1500			94	466
GTR50B120	5000/500	IV	III	1200	468	218	136	436
GTR50B130				1300			137	445
GTR50B150				1500			130	489
GTR60B130	5500/600	IV	IV	1300	535	182	98	508
GTR60B160				1600			101	541
GTR60B180				1800			103	563