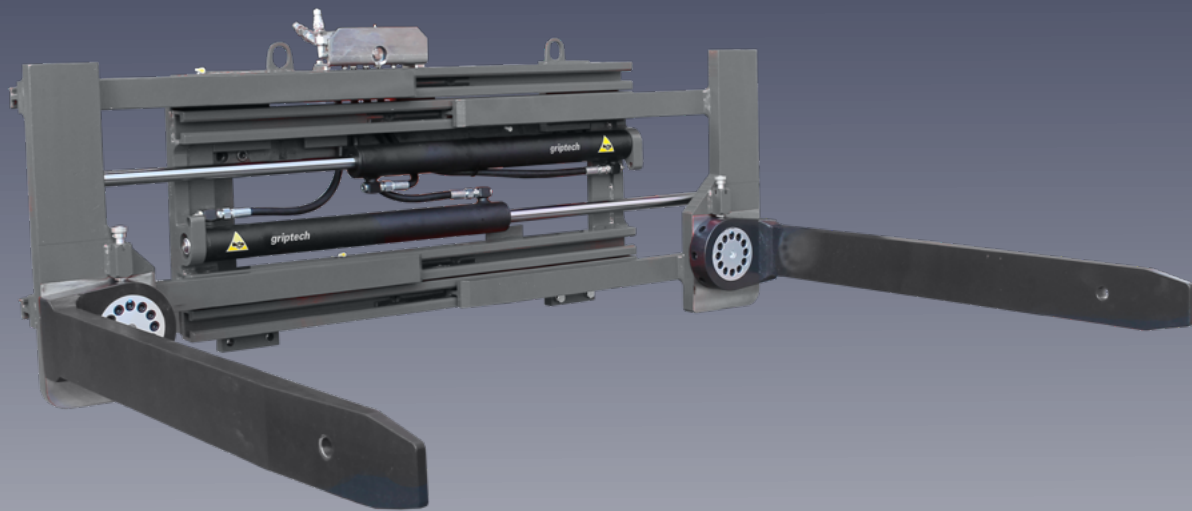


griptech

PIVOTING FORK CLAMP | GPP-E



Features:

- ▶ Load capacity from 1,200 kg to 2,200 kg
- ▶ Manually rotatable forks, lockable at 0°, 45°, and 90°
- ▶ Reduced weight, lost load center, and overall length
- ▶ Free view frame with welded guides
- ▶ Also suitable for transporting barrels, drums, pipes, and rolls

Attachments

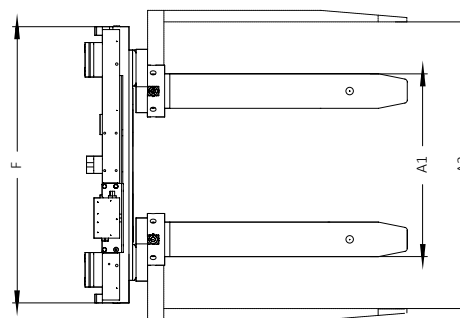
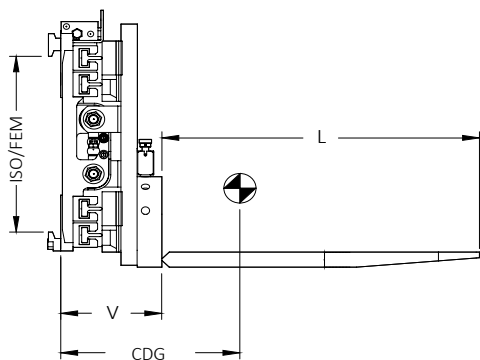
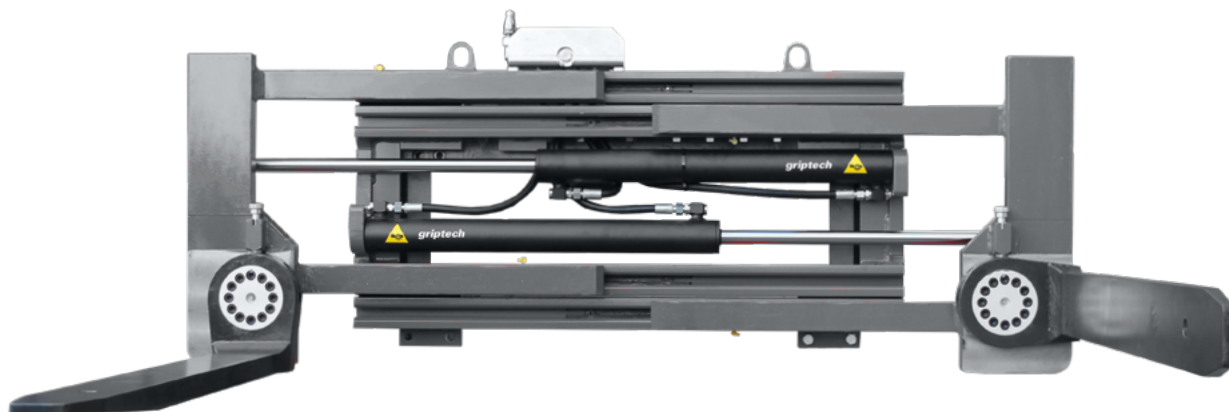
Weighing systems

Camera systems

PIVOTING FORK CLAMP | GPP-E

Our Handling Specialist

The GPP-E rotating fork clamp not only ensures safe pallet handling, hydraulic clamping of different loads, and fork adjustment, but also offers the ability to manually rotate the forks and lock them at 0°, 45°, and 90°. This makes it possible to safely transport barrels, drums, pipes, and rolls as well.



Pivoting fork clamp Fork length L = 1200 mm (2 functions, manual rotating forks)

Series	Load capacity in kg on clamp- ing / forks	ISO/ FEM	LC mm	Width F mm	A1 mm	A2 mm	Cross section DxS mm	L mm	V mm	COG mm	Weight kg
GPP15E065C.120	1200/1400	II	500	960	440-1600	550-1710	120x35	1200	246	242	371
GPP15E165C.120				1060	440-1700	550-1810				235	385
GPP20E155C.120	1900/2200	II	500	1060	355-1515	455-1615	120x40	1200	246	248	398
GPP20E255C.120				1160	355-1615	455-1715				245	406
GPP30E155E.120	2200/2900	III	500	1060	355-1515	435-1595	120x50	1200	246	272	419
GPP30E255E.120				1160	355-1615	435-1695				269	425
GPP30E455E.120				1360	355-1815	435-1895				261	441